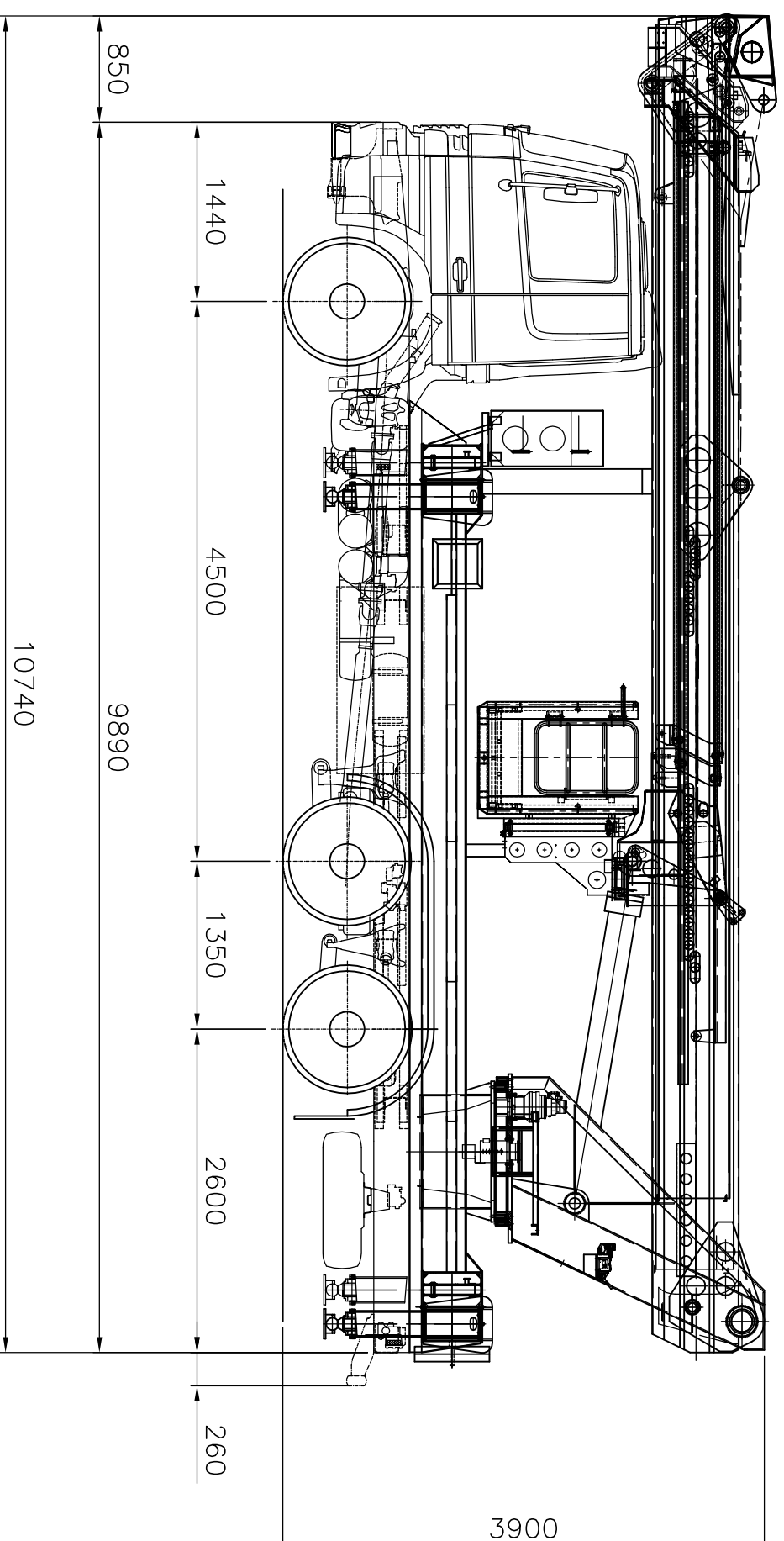


AP 44/29

INGOMBRI UNITA' IN CONDIZIONI DI TRASPORTO



⇨
7.300 Kg

⇨
18.700 Kg

INSTALLAZIONE SU AUTOCARRO

MERCEDES-BENZ 2532 L 6X2 ACTROS

PESO TOTALE : 26.000 Kg

SUBJECT TO SLIGHT MODIFICATIONS

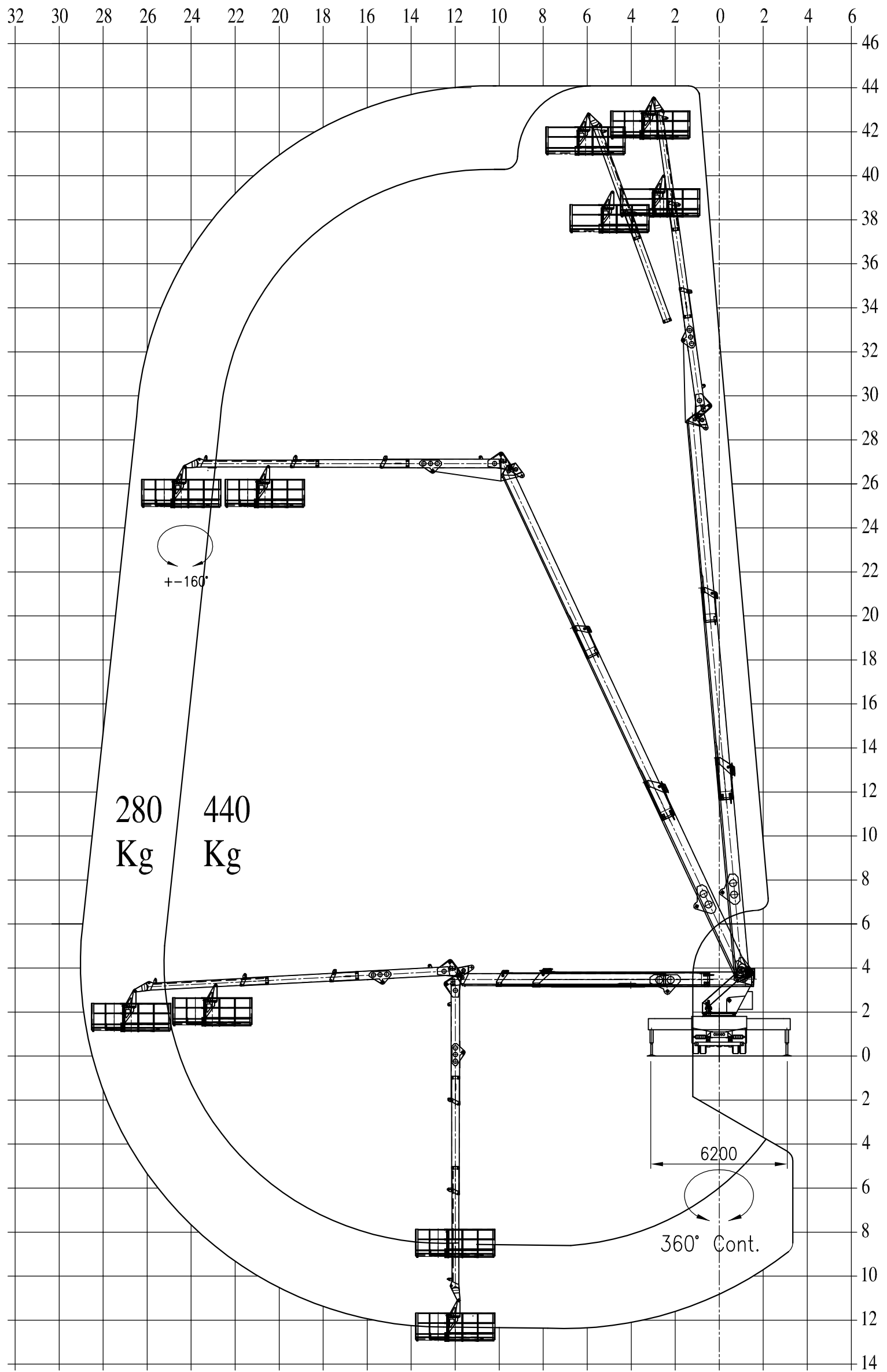
denominazione GENERAL SCHEME		
completivo AP 44/29		
CAD DWG	rf.dts.n.	
	dts.	
	cont.	
matr.	dts.n.	lav.n.
Standard	4733/1	-
ddta	scdle	
13/10/03	1:50	

FILE: dis/offerte/ap/op_4428/eseecutivo3-D-4733/1-strada-standard-actros_2531L

— cittadella pd — tel.049/5971300 fax 049/9400229 — <http://www.barin.it> E-mail:info@barin.it
even partial is forbidden by law—use and spreading to third parties is forbidden—copyright

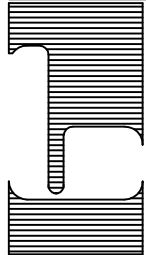
AP 44/29

CAMPO DI LAVORO



PORTATA PIATTAFORMA :
280 Kg / 440 Kg

CAD DWG



pos.	denominazione	quant.	sp	lung.	mat.	c.n.p.
	denom.ne WORK RANGE DIAGRAM				matr. -	dis.n. 4734/1 lav.n. -
	compl.vo AP 44/29				data 13.10.2003	scale 1: 200 (1: - - -)
	riferim.dis.n.				dis.	contr.
barin spa - Automatic Bridge Control - cittadella pd - tel.049/5971300						
fax 049/9400229 even partial is forbidden by law-use and spreading to third parties is forbidden-copyright						

SUBJECT TO SLIGHT MODIFICATIONS